

## 1 Cycling around Cap aux Meules Island

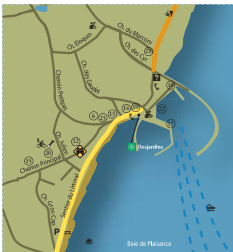


**Suggested departure /Arrival:** La Côte Ste. H H C P  
**Route type:** Loop  
**Distance:** 20 km  
**Bikeway type:** 90% roadway, 10% path  
**Surface:** 97% paved, 3% stone dust  
**Level:** Intermediate  
**Description:** This captivating circuit links the three villages on the main island and leads to many attractions and services such as beaches and picnic areas where it is a pleasure to stop for a picnic and a contemplative moment. And don't forget even counting the many other attractions and viewpoints, that will make your island tour a real joy. Lots of good reasons to travel on two wheels!

### Attractions and Services

- 1 **Aéroport Carrefour d'Aventures**  
1204, chemin de la Verrière, L'Étang-du-Nord  
418 986-6577 / 1 866-986-6577
- 2 **Boutique d'art Tendance**  
718, chemin Principal, Cap-aux-Meules  
418 986-5161
- 3 **Coop L'Éveil**  
605, chemin des Caps, Fatima  
418 986-2565
- 4 **Coop L'Inid**  
1069, chemin Gros-Cap, L'Étang-du-Nord  
418 986-2279
- 5 **Les Châlets La Martinique**  
552, route 199, La Martinique  
418 986-4605 / 1 888-986-5777
- 6 **Hertz Rental cars, scooters, motorcycles**  
323, chemin Principal, Cap-aux-Meules  
418 986-6565 / 1 888-918-4537
- 7 **Marjolaine Mousse, Massotherapist**  
48, chemin du Cap-Cha, L'Étang-du-Nord  
418 986-4279
- 8 **Oasis Laliberté**  
462, chemin de l'Église, Fatima  
418 986-4505
- 9 **Parc de Gros-Cap**  
74, chemin de Camping, L'Étang-du-Nord  
418 986-2330
- 10 **Restaurant des Caps, Fatima**  
1342, chemin des Caps, Fatima  
418 986-4579
- 11 **Vert et Mer**  
633, chemin des Caps, Fatima  
418 986-3555 / 1 866-986-3555
- 12 **Auberge Madeli**  
455, chemin Principal, Cap-aux-Meules  
418 986-2211
- 13 **Côte-à-Côte Gourmet Butcher Shop**  
225, chemin Principal, Cap-aux-Meules  
418 986-3332
- 14 **Laundromat**  
267, chemin Principal, Cap-aux-Meules  
418 986-2036
- 15 **Café du Moussoigneur (Coffee House)**  
625, chemin Principal, Cap-aux-Meules  
418 986-6517
- 16 **Château Madelon**  
323, chemin Principal, Fatima  
418 986-3695
- 17 **Excursions en mer**  
1001, Cap-aux-Meules Marina  
418 986-4745
- 18 **Groupe CIMA**  
613, chemin du Quai, Cap-aux-Meules  
418 986-3278 / 1 888-986-3278
- 19 **La Poissonnière**  
225-A, chemin Principal, Cap-aux-Meules  
418 986-2171
- 20 **Le Pédaler**  
545, chemin Principal, Cap-aux-Meules  
418 986-2945
- 21 **Les Saveurs de l'Art**  
97, chemin Principal, local 3, Cap-aux-Meules  
418 986-4590
- 22 **M.V. Ivan Quinn**  
Cap-aux-Meules Harbour  
418 986-3278 / 1 888-986-3278
- 23 **Service routier Léon Lapierre Inc.**  
323, chemin Principal, Cap-aux-Meules  
418 986-3377 / 418 986-6565

### Village of Cap-aux-Meules



### Tourist Information Centre

1201, chemin Principal (next to the Ferry Terminal)  
Open year-round. Consult the Official Tourist Guide for the schedule.  
[www.tourismeilesmadeleine.com](http://www.tourismeilesmadeleine.com)  
418 986-2245 or 1 877 630-4437

**Arrimage corporation culturelle des Îles de la Madeleine**  
Organization devoted to the development and promotion of arts and culture, Arrimage provides information on cultural activities 5 days per week in its offices located in the Étang-du-Nord Recreational Centre.  
Access our web site anytime at [www.arrimage-im.qc.ca](http://www.arrimage-im.qc.ca)  
Telephone: 418-986-3083

## 3 Cycling around Bassin Havre Aubert Island



**Suggested departure /Arrival:** Ferme de sable Craft Bakery  
**Route type:** Loop  
**Distance:** 25 km  
**Bikeway type:** 100% roadway  
**Surface:** 100% paved  
**Level:** Intermediate  
**Description:** The coast road takes you all around the western end of the island. This panoramic route rises by a number of distinctive architectural ensembles, including the church and rectory and the Ance à la Cabane. With a beautiful view of the bay and the sea, in passing, you will also see a glimpse of Cap-Merit rock in the distance. There are plenty of hills and valleys along this road to keep serious sport cyclists happy. When the wind is coming from the southwest, it is wise to take this route in a counter-clockwise direction.



### Attractions and Services

- 1 **Artisans du sable, Sand ECONOMISEUM**  
1007, route 199, La Grave, Havre-Aubert  
418 937-2917
- 2 **Auberge chez Denis à François**  
424, chemin d'An Haud, Havre-Aubert  
418 937-2371
- 3 **La Fleur de sable Craft Bakery**  
102, route 199, Havre-Aubert  
418 937-2917
- 4 **Boutique Émerance**  
948, route 199, Havre-Aubert  
418 937-9058
- 5 **Café de la Grave**  
969, route 199, La Grave, Havre-Aubert  
418 937-9204
- 6 **La Grave - Historical Site**  
South end of Route 199, Havre-Aubert
- 7 **Site d'Autrères**  
3106, chemin de la Montagne, Basin  
418 937-9133

## 2 Cycling around Treasure Island Havre aux Maisons



**Suggested departure /Arrival:** Dune du Sud municipal road-side rest area  
**Route type:** Loop  
**Distance:** 1 km  
**Bikeway type:** 100% roadway  
**Surface:** 70% paved, 30% stone dust  
**Level:** Intermediate  
**Description:** Every turn of the wheels brings you reaching new views of the traditional village. The most charming circuit winds through areas where old-style homes cling tightly to bare hills. New connections from the Route verte (199) link us to this circuit.

### Attractions and Services



- 1 **Châlets-Camping des Sillons**  
436, chemin Dune du Sud, Havre-aux-Maisons  
418 969-2134
- 2 **Domaine du Vieux Couvent**  
292, route 199, Havre-aux-Maisons  
418 969-2233
- 3 **Fromagerie du Pied-de-Vent**  
149, chemin Pointe-Basse, Havre-aux-Maisons  
418 969-9202
- 4 **La Butte Ronde, couette et café**  
70, chemin des Buttes, Havre-aux-Maisons  
418 969-2047
- 5 **La Maison d'Éva-Anne**  
306, chemin Pointe-Basse, Havre-aux-Maisons  
418 969-4033
- 6 **Le Barbocheux**  
475, chemin Cap-Rouge, Havre-aux-Maisons  
418 969-2154
- 7 **Fumoir d'Antan, Smoked fish ECONOMISEUM**  
627, chemin du Quai, Pointe-Basse  
418 969-4907
- 8 **Le Veau des Nathali**  
326, chemin Pointe-Basse, Havre-aux-Maisons  
418 969-4953
- 9 **Hertz Rental: cars, scooters, motorcycles**  
no. 7, 205, chemin de l'Aéroport (inside the airport)  
418 969-4229 / 1 888-810-4537
- 10 **Super Marché Coop de Havre aux Maisons**  
459, route 199, Havre-aux-Maisons  
418 969-2600
- 11 **Verrerie La Méduse**  
438, route 199, Havre-aux-Maisons  
418 969-4681

## 4 Cycling the Eastern Islands Pointe aux Loups, Grosse Île and Grande Entrée

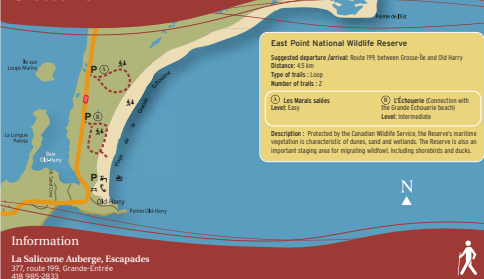


**Route type:** Linear  
**Distance:** 50 km from the Cap-aux-Meules harbour  
**Bikeway type:** 100% roadway  
**Surface:** 100% paved  
**Level:** Intermediate  
**Description:** Where else could you sit, admire your bike and still be so much closer to nature with the sea? Cycle for nearly 50 kilometers along the main road linking Havre aux Maisons Island, Pointe aux Loups, Grosse Île and Grande Entrée. Not between the sky and the sea along a route where every sunbather's magnificent view is clear. Start with light south-westerly winds.

### Attractions and Services

- 1 **Café de l'Est**  
503, chemin Principal, Grosse-Île (Old Harry)  
418 985-2552
- 2 **C.A.M.I. Historical Heritage Complex**  
787, route 199, Old Harry  
418 985-2126
- 3 **La Maison du Héron**  
21, chemin Quai-Sud, Pointe-aux-Loups  
418 969-4879
- 4 **La Maison du Loup-Marin**  
22, chemin de l'École, Pointe-aux-Loups  
418 969-9385
- 5 **La Salicorne Auberge, Escapades**  
377, route 199, Grande-Entrée  
418 985-2833

## 5 East Point National Wildlife Reserve Grosse Île

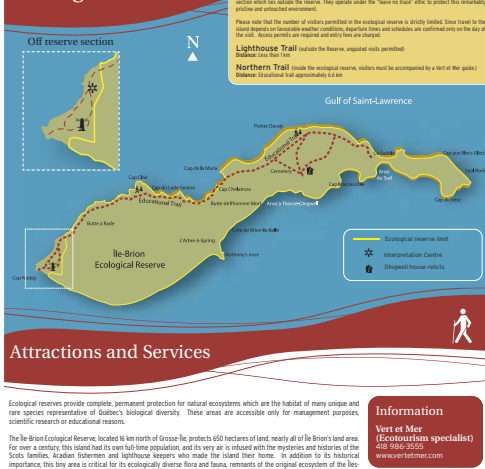


**East Point National Wildlife Reserve**  
**Suggested departure /Arrival:** Route 195 between Grosse-Île and Old Harry  
**Distance:** 0.5 km  
**Type of trails:** Loop  
**Number of trails:** 2  
**Level:** Easy  
**Le Marin sauté**  
**Écologique Connection with Old Harry (Ecological Health)**  
**Description:** Protected by the Canadian Wildlife Service, the Reserve's maritime vegetation is characteristic of dunes, sand and wetlands. The Reserve is also an important staging area for migrating wildlife, including shorebirds and ducks.

### Information

- 1 **La Salicorne Auberge, Escapades**  
377, route 199, Grande-Entrée  
418 985-2833

## 7 Île-Brion Ecological Reserve



**Departure /Arrival:** Centre de la Rivière  
**Description:** The location of an ecological program offered on Île-Brion. The monitor responsible for management of the reserve. The location of an ecological program offered on Île-Brion. The monitor responsible for management of the reserve. The location of an ecological program offered on Île-Brion. The monitor responsible for management of the reserve. The location of an ecological program offered on Île-Brion. The monitor responsible for management of the reserve.

### Attractions and Services

- 1 **Information**  
**Vert et Mer (Ecotourism specialist)**  
418 986-3555  
[www.vertetmer.com](http://www.vertetmer.com)

## 8 Boudreau Island Grande Entrée

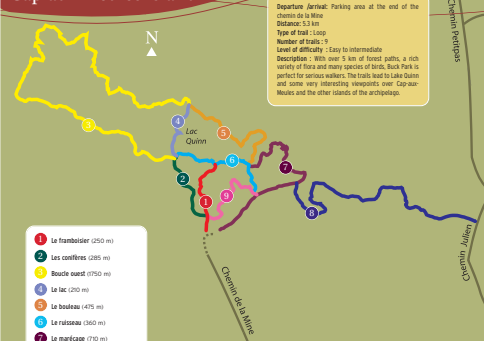


**Suggested departure /Arrival:** Chemin du Bassin Ouest  
**Distance:** 2 km  
**Type of trail:** Linear  
**Number of trails:** 1  
**Level:** Intermediate  
**Description:** 1. Ile Boudreau, with a surface area of about 12 hectares, is located on the southern part of Grande-Entrée Island. In fact, it is a peninsula rather than an island since it can be reached anytime along Chemin du Bassin Ouest and the Passage de la Butte (24). It can also be accessed at low tide along the beach at Bassin Est (3). The Madeleine Islands Conservation Society (SMI) acquired the property in 2004 to protect it from any development that might be potentially incompatible with its conservation. The SMI is pleased to see for the first time the Madeleine heritage and following these simple rules:

### Information

- 1 **La Salicorne Auberge, Escapades**  
377, route 199, Grande-Entrée  
418 985-2833
- 2 **Société de conservation des Îles de la Madeleine (Isles-de-la-Madeleine Conservation Society)**  
418 986-1706

## 6 Buck Park Cap aux Meules Island



**Departure /Arrival:** Parking area at the end of the chemin de la Rivière  
**Distance:** 5.3 km  
**Type of trail:** Loop  
**Number of trails:** 9  
**Type of difficulty:** Easy to Intermediate  
**Description:** With over 5 km of forest paths, a rich variety of flora and many species of birds, Buck Park is perfect for serious walkers. The trails lead to Lake Quinn and some very interesting viewpoints over Cap-aux-Meules and the other islands of the archipelago.

### Attractions and Services

- 1 **Le framboisier** (250 m)
- 2 **Les coquelins** (285 m)
- 3 **Beauvédé** (370 m)
- 4 **Le lac** (295 m)
- 5 **La bodinée** (475 m)
- 6 **La rotonde** (340 m)
- 7 **La maréchale** (370 m)
- 8 **Beauvédé** (370 m)
- 9 **La mine** (285 m)

## 9 Ivan Quinn Trail Entry Island



**Departure /Arrival:** Post Office Road  
**Distance:** 15 km  
**Type of trail:** Linear  
**Number of trails:** 1  
**Level:** Intermediate  
**Description:** You will be enchanted with the unspoiled nature of Entry Island, by the soft hues of its hills and landscapes. From Big Hill, where the main peak is the highest point of the archipelago, you will enjoy a breathtaking view over the Islands. The trail leading to the summit of Big Hill was named for Ivan Quinn, born 1840, great musician and very colorful folk character, who passed away in 2002.

### Attractions and Services

- 1 **Chez Brian Josée**  
Entry Island  
418 986-5062
- 2 **Excursions en mer**  
Cap-aux-Meules Marina  
418 986-4745
- 3 **Entry Island Historical Museum**  
Post Office Road, Entry Island  
418 986-6622
- 4 **M.V. Ivan-Quinn**  
Cap-aux-Meules Harbour  
418 986-3278 / 1 888-986-3278

- 1 **Artisans du sable, Sand ECONOMISEUM**  
1007, route 199, La Grave, Havre-Aubert  
418 937-2917
- 2 **Auberge chez Denis à François**  
424, chemin d'An Haud, Havre-Aubert  
418 937-2371
- 3 **La Fleur de sable Craft Bakery**  
102, route 199, Havre-Aubert  
418 937-2917
- 4 **Boutique Émerance**  
948, route 199, Havre-Aubert  
418 937-9058
- 5 **Café de la Grave**  
969, route 199, La Grave, Havre-Aubert  
418 937-9204
- 6 **La Grave - Historical Site**  
South end of Route 199, Havre-Aubert
- 7 **Site d'Autrères**  
3106, chemin de la Montagne, Basin  
418 937-9133