

ÎLES DE LA MADELEINE

SET BETWEEN SEA AND SKY



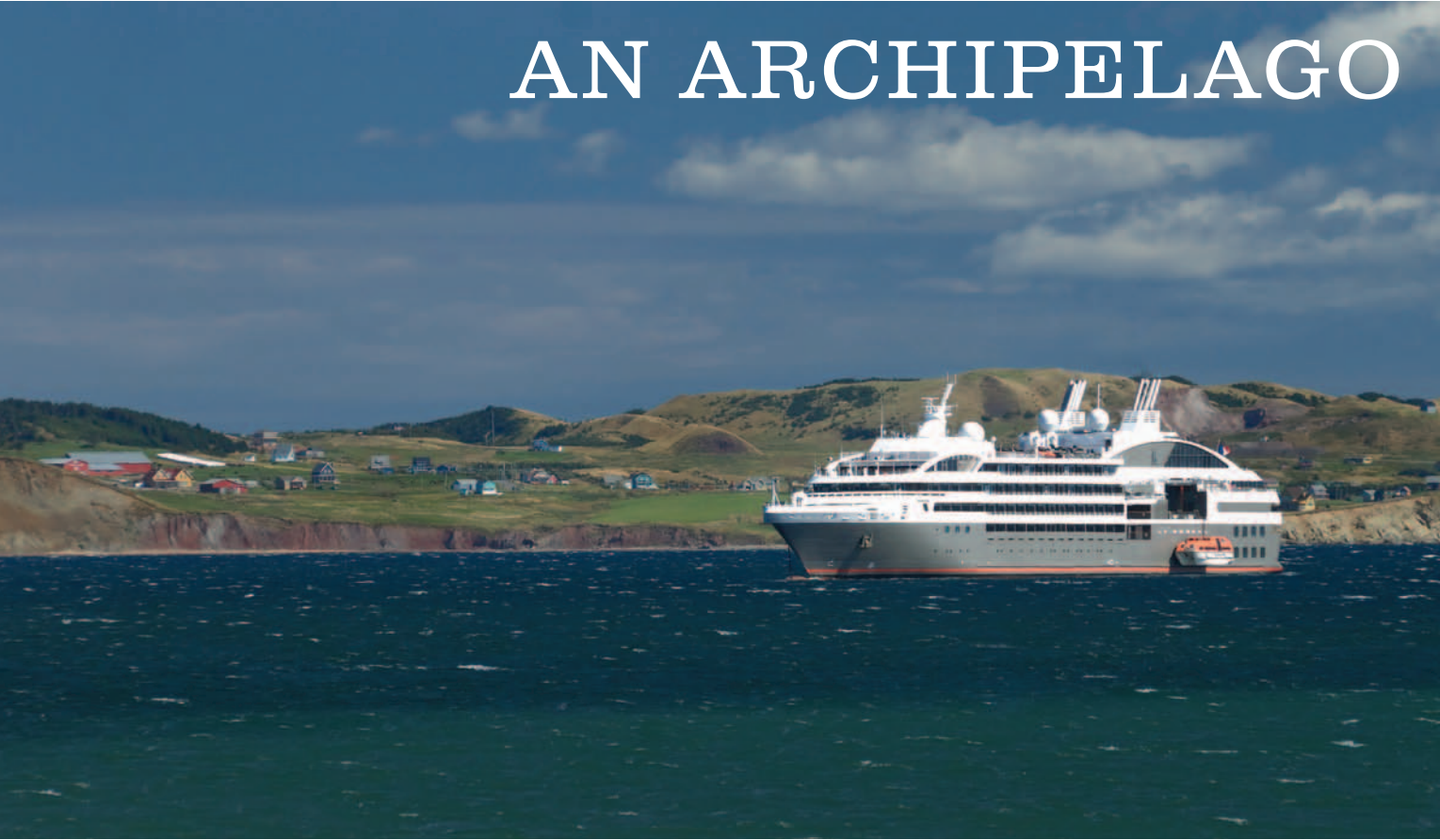


- Located in the geographical centre of the Gulf of Saint Lawrence, the Magdalen Archipelago also sits astride the Canada-New England Shipping lane. The Islands lie 215 km from the Gaspé Peninsula, 105 km from Prince Edward Island and 95 km from Cape Breton Island.



THE DISCOVERY

AN ARCHIPELAGO





- The archipelago is made up of about a dozen islands, six of which are linked by sand dunes. Seen from the air, the Îles de la Madeleine look rather like a 100 km-long fish hook. The Islands' main land forms are cliffs, rolling hills and over 300 km of honey-coloured sand.



■ Your passengers will be delighted with the unique culture of the Islands and their extensive unspoiled natural spaces. You can offer them an unforgettable experience taking in the archipelago's pristine environment, exceptional coastline and magnificent maritime scenery. ■ When you choose the Islands, you are rewarded with a privileged look at the elements, the extent, the origins and the evolution of a rich, fragile, natural environment.



UNFORGETTABLE EXPERIENCE



■ You will also meet people who are renowned for their warm hospitality and enter a community whose lilting accents invite you to relax and leave your cares behind. ■ A stop on the Îles de la Madeleine is the perfect opportunity to experience and share a lifestyle that has been shaped over the centuries by the omnipresent sea. Local chefs are renowned for their special talent in making savoury use of the sea's bounty. And, as an added plus, the mild maritime climate helps extend summer until the end of September.



CORDIAL PEOPLE

MUSEUMS, INTERPRETATION CENTRES AND OTHER INTERESTING ACTIVITIES ...

■ If you would like to experience the history of the Îles de la Madeleine and understand the culture and the environment, take some time to visit our museums and interpretation centres where you will learn what makes this Gulf of Saint Lawrence archipelago so unique and special.

Site d'autrefois

Life size and in miniature, presentation of how the early settlers lived in the Magdalen Islands. Explore the interiors of homes and farm buildings, see the livestock. Hear a Madelinot fisherman recounting the evolution of a fisherman's life. Magnificent scenery from the observation tower.

Musée de la Mer

Permanent exhibit "Laboueurs du Golfe" offers a tour into the history of the Islands. The evolution of navigation illustrated with model boats and lighthouses, photos and maritime objects; stories about fishing, hunting and shipwrecks. Collections of Magdalen Islands rocks, minerals and shellfish.

Centre d'interprétation du phoque (Seal Interpretation Centre)

Enter the fabulous universe of the seal! Visit our interactive exhibit to learn all about these fascinating marine mammals and feast your eyes on our sound and vision History of the Ice! A visit that will delight both children and adults with its combination of historical, scientific and ecological content.

Site de La Côte

This public park at the Site de la Côte is a popular meeting place for both Madelinots and visitors. Shows featuring local and off-island performers, a gathering place for artists at the de Symposium de peinture figurative (Figurative Painting Symposium). Boutiques, café and a must-see view over the fishing port.

Mes Îles, Mon pays

"My Islands, My Country" is a theatrical epic in which more than 40 participants act out the history of the Îles de la Madeleine. Simultaneous translation in English. A succession of tableaux depicting the history of the Magdalen Islands.

CAMI

In this Little Red School House, visualize the old classroom with the aid of the existing hardwood floor, chalkboard, and two original desks. Over the years the museum's collections have grown and evolved to include old photographs, stories, and artifacts that help depict a time gone by.

Écomusée de la Mi-Carême

Get into the party mood when you visit the Mid-Lent Economuseum. A unique festival with costumes, music and fun. A look at an unparalleled tradition and cultural experience.



VISUAL ARTS AND CRAFTS CIRCUIT

■ You just can't visit the Îles de la Madeleine without taking some time to meet the artists and craftspeople at home or in their workshops, boutiques or exhibitions. Discover this special aspect of the Madelinot culture.

Verrerie La Méduse

Located in a historic building. Beautiful objects created from blown and worked glass. A visit to La Verrerie La Méduse is an unforgettable experience! View the artists at work and read the interpretation panels explaining the different steps in the creation of glass art.

Artisans du Sable

Explore this economuseum where your dreams and memories take form in sculptured sand. The Artisans du Sable boutique welcomes you to the magic of its world.

Site historique La Grave

A unique historical site whose authentic traditional architecture is living evidence of a bygone era. La Grave stretches along a narrow pebble beach. Lots of activity, lots to see and do, all accessible on foot!

FLAVOURS CIRCUIT

■ As fresh and good as the sea air of the Islands, our farm products capture the fresh taste of our rolling hills. As fresh and wonderful as the ocean itself, our fish and seafood products serve you the flavourful essence of our salty air and pristine Gulf waters.

Le Fumoir d'Antan

Visit the smokehouse and revisit a time when smoked herring was essential to the economy of the Islands. Testimonials, photographs and artefacts illustrating the transformation of smoked fish and the evolution of this industry. Your gourmet taste buds will really appreciate the fine flavour of the Fumoir's products.

Fromagerie Pied-de-Vent

Cheese factory where fresh milk is transformed into the savoury raw milk cheeses for which this business is famous. In the economuseum you will learn more about cheese making and how it got started in the Islands.

À l'abri de la Tempête

À l'abri de la Tempête feels that it is important to use locally produced raw materials in its beers. The development of smoked malt at the Fumoir d'Antan, locally harvested flowers, seaweed, fresh herbs and spices are your guarantee that our products are authentic, unique and very classy.





■ The Îles-de-la-Madeleine are the ideal place for walking tours, a perfect spot for total relaxation. Marked trails lead you along promontories and cliffs. One of these is the Sentier du littoral (coastal trail), that begins near the port. A stairway climbs the cliff to the top of “la butte du Cap-aux-Meules”, where you can enjoy the view over Cap-aux-Meules village and its port. ■ Services of various kinds are available all along the trail, which ends at a small beach surrounded by the red cliffs of Gros-Cap. Along the way you will find a post office, banks, a hospital, a pharmacy, the office of the Canadian Border Service, etc.

PORT OF CAP-AUX-MEULES

■ The Port of Cap-aux-Meules is located on the archipelago's central island. The commercial docks are the main supply point for goods needed on the Islands, and also the main entry point for cruise ships stopping here.

MARINE REFERENCES

- Latitude 47°23' N.
- Longitude 61°52' O.
- Marine charts : no 4950, 4956 et 4002
- Tidal range (spring tide) : 2.2m
- Height of wharf deck : 3.66m

ACCESS CHANNEL

The Port of Cap-aux-Meules can be reached along a dredged channel whose depth varies from 5.4m to 6.8m. Ships with greater draft can anchor in the Baie de Plaisance opposite the port. From the anchorage, the shuttle distance varies from 1 to 1.5 nautical miles, depending on the anchorage site chosen.

SERVICES AVAILABLE:

- Shipping office
- Pilot services available upon request
- Fresh water and power
- Supplies (food, fuel oil, fuel)
- Minor repairs
- Canadian Coast Guard Search and Rescue Service
- Wharf and floating docks to accommodate shuttles from ships at anchor
- Passenger terminal for cruise ships

	Length	Draft	Deck
Tanker wharf (commercial 1)	140,5m	8m	11,2m
Cruise ship wharf (commercial 2)	82m	5,5m	36m



USEFUL CONTACT INFORMATION

Travel Professionals

Escale Îles de la Madeleine
Denis Bourque / Coordinator, croise product
denis.bourque@escaleim.ca
www.escaleilesdelamadeleine.com
418 986-6667

Tourist Information

Tourisme Îles de la Madeleine
info@tourismeilesdelamadeleine.com
www.tourismeilesdelamadeleine.com
877 624-4437

Port Information

Transport Canada
Johanne Lebel
Acting Director, port and airport
johanne.lebel@tc.gc.ca
www.tc.gc.ca
418 986-3785

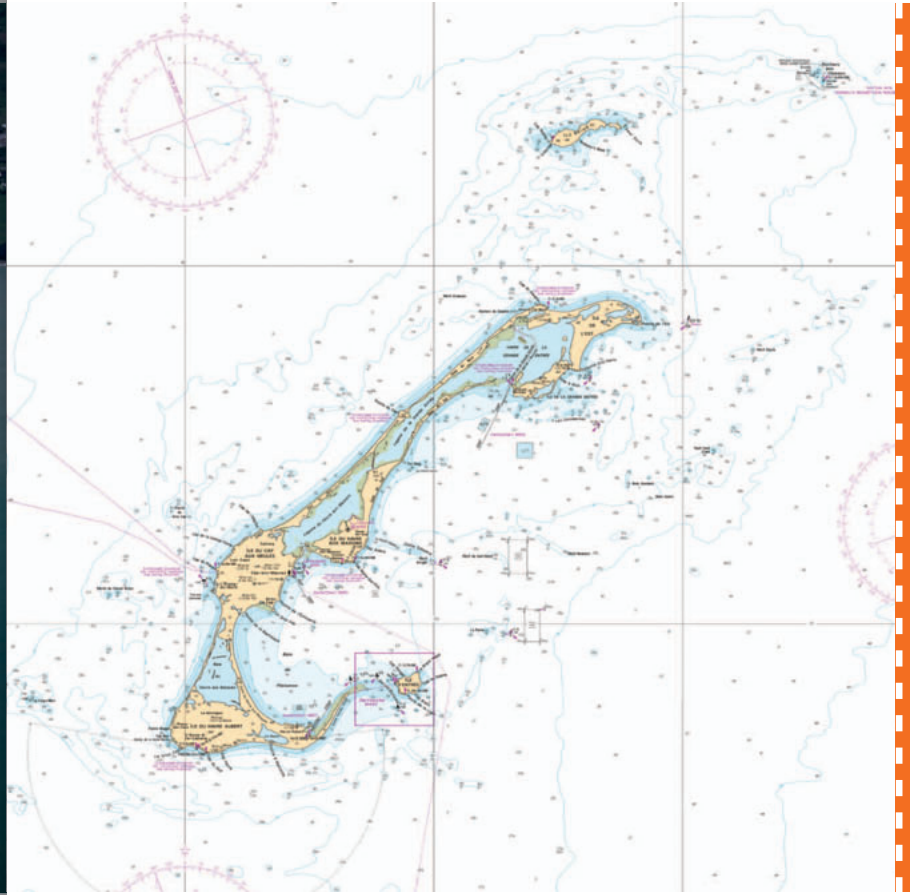
Shipping Office

Groupe C.T.M.A.
Mario Landry
Shipping agent
mario.landry@ctma.ca
www.ctma.ca
418 986-6600

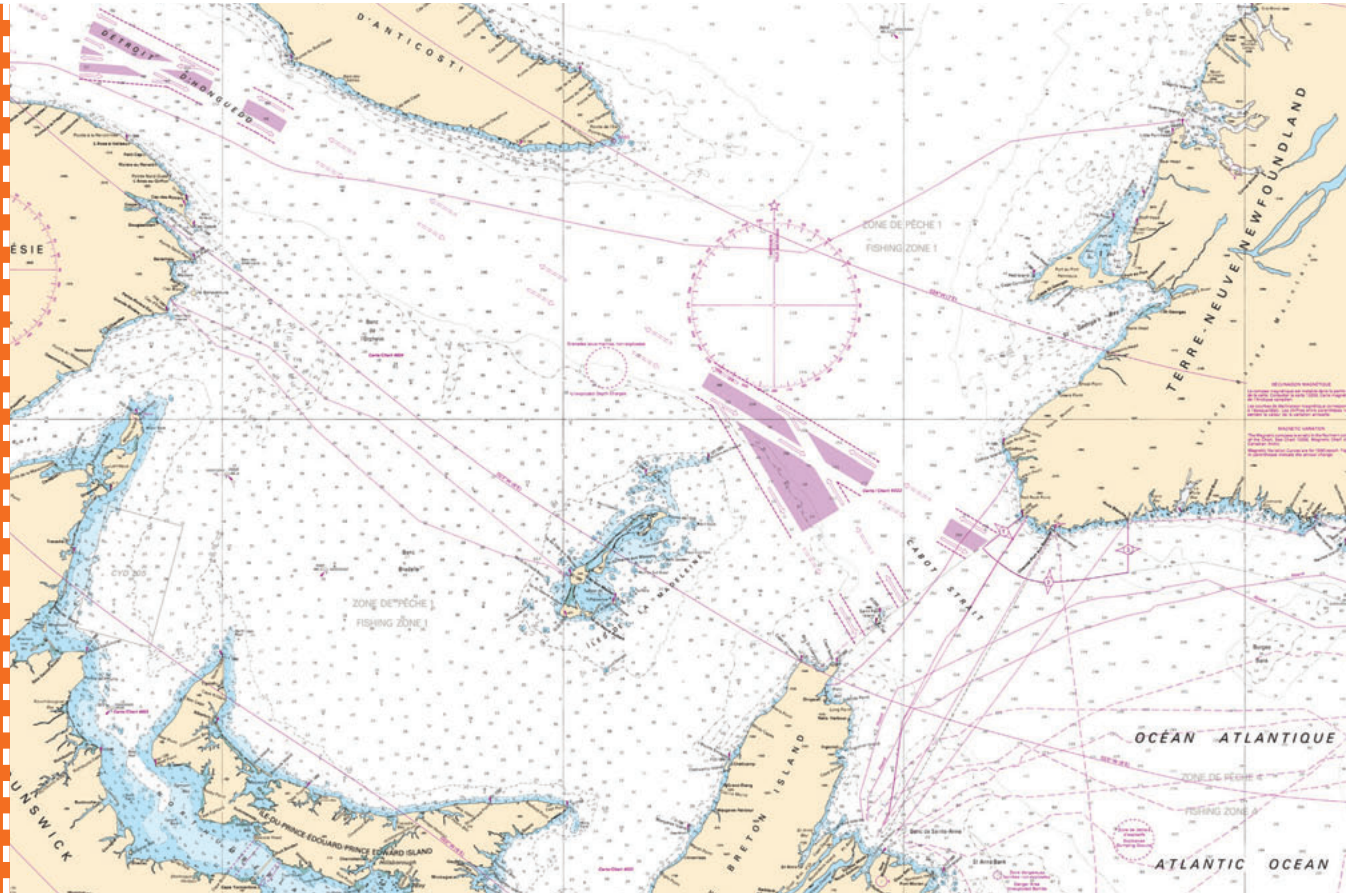
Tour Operator

Damien Deraspe
damien.deraspe@autobuslessillons.com
418 986-3886
Cell: 418 937-8697

City (Province, State, Country)	Distance (Nautical miles)
Montréal (QC)	680
Québec (QC)	541
Percé (QC)	148
Charlottetown (PEI)	140
Sydney (NS)	125
Halifax (NS)	340
Corner Brook (NL)	202
Port-aux-Basques (NL)	115
Saint-Jean (NL)	420
Saint-Pierre et Miquelon (France)	240
Boston (MA)	720
New York (NY)	836



NOT FOR NAVIGATION



NOT FOR NAVIGATION

